

Factors of Norway spruce (*Picea abies*) survival during severe bark beetle (*Ips typographus*) outbreak in Central Europe:

EXTEMIT-K non-linear tree resistance responses



Nataliya Korolyova^a, Arne Buechling^a, Renata Ďuračiová^b, Rastislav Jakuš^a

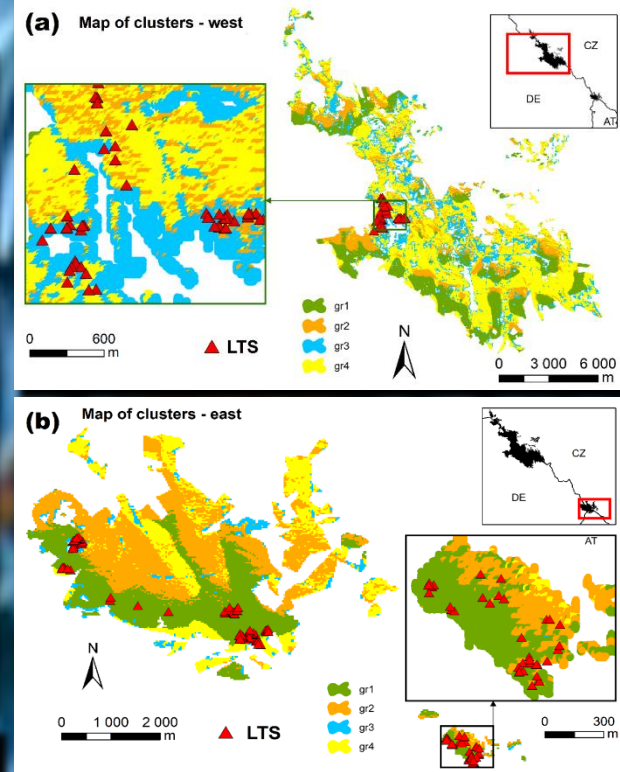
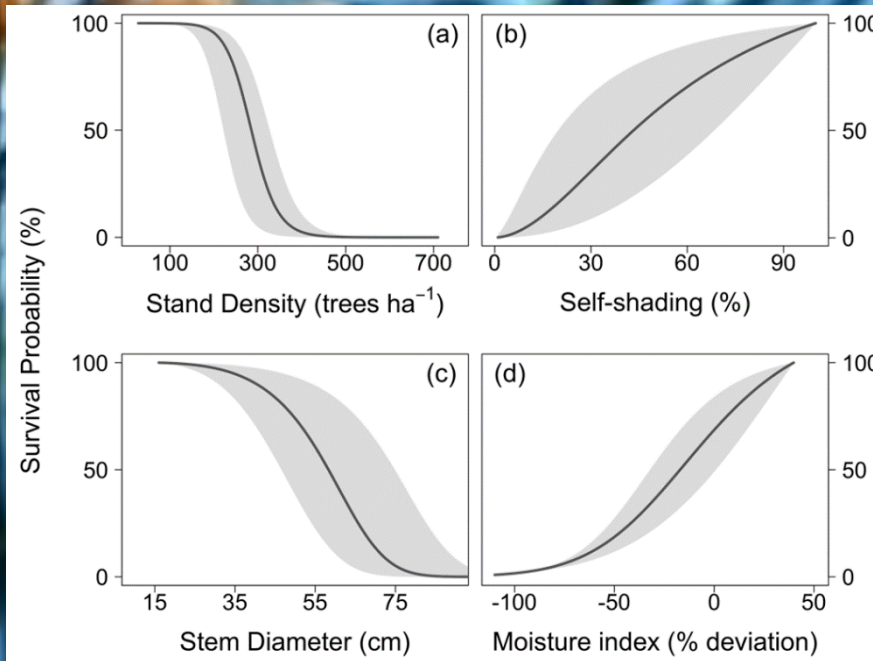
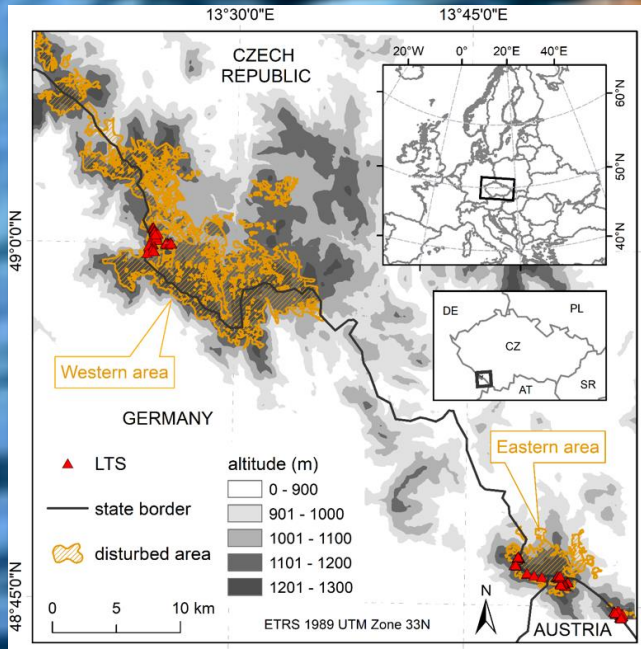
BETTER CHANCE TO SURVIVE have trees:

- in **LESS DENSE STANDS**
- with **LONGER CROWNS**
- of **SMALLER SIZE**
- in **MORE MESIC SOIL**

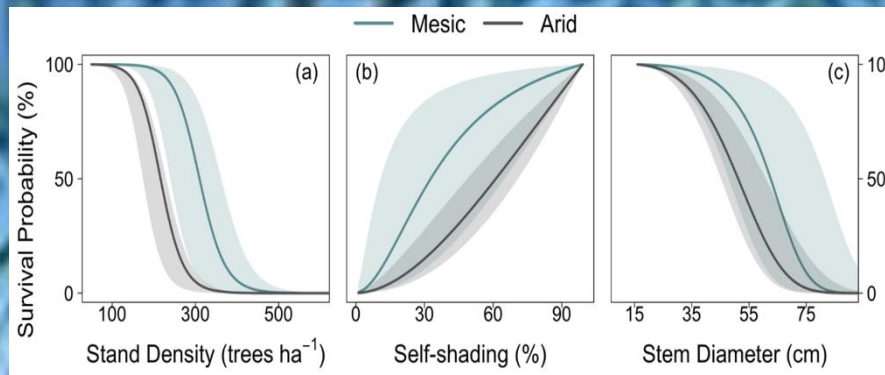
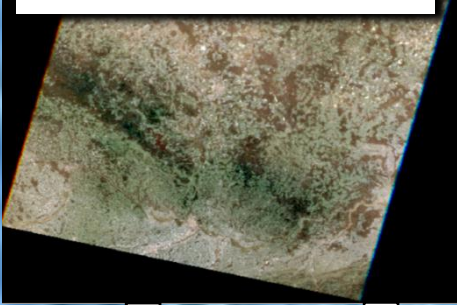


LAST STANDING TREES (LTS)

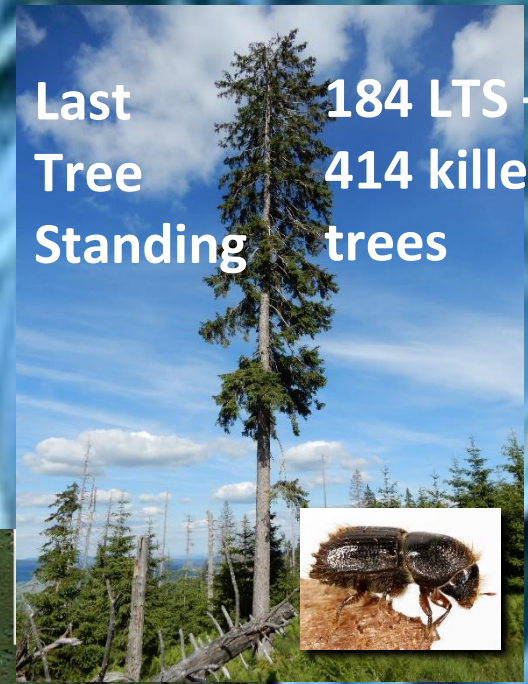
SURVIVE IN CLUSTERS at upper slope positions



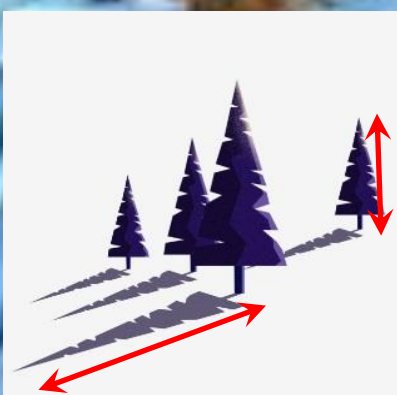
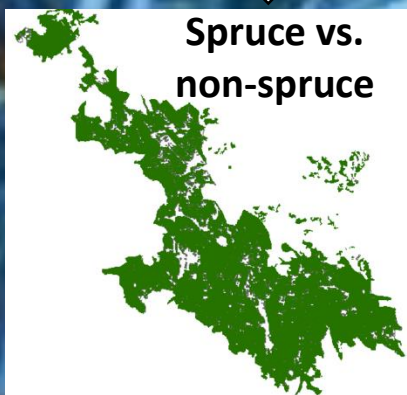
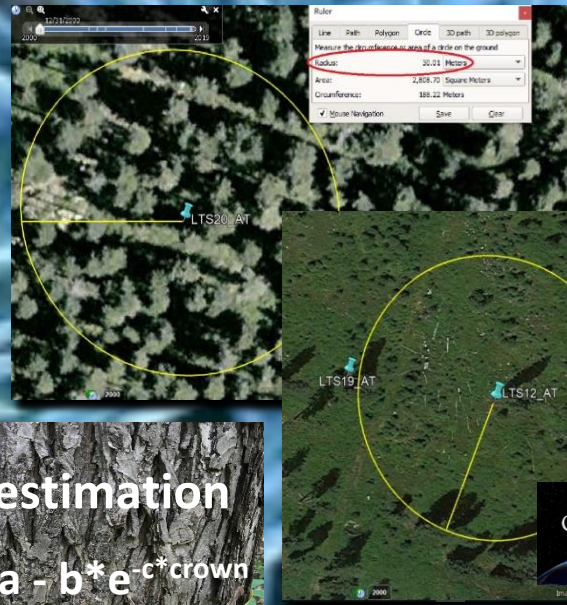
Landsat 5, 1986



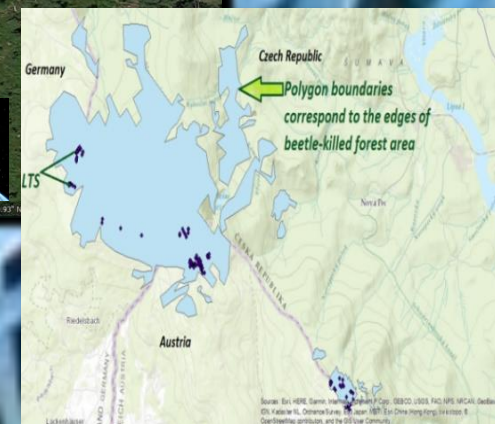
Last Tree Standing 184 LTS + 414 killed trees



Pre-outbreak stand density estimation
exponential model with non-linear Tasseled Cap wetness index, spectral bands 3, 4, 5, structural index, folded aspect



DBH estimation
 $DBH = a - b * e^{-c * crown}$



Survival probability = POT[country] x Stand density x Self-shading x DBH x Soil Moisture Index

pseudo-R² = 0.85, bias = 0.99, POT is a theoretical, maximum tree survival probability determined by likelihood estimation

^a Czech University of Life Sciences Prague, Faculty of Forestry and Wood Sciences, EXTEMIT-K, Prague, Czech Republic

^b Department of Theoretical Geodesy, Faculty of Civil Engineering, Slovak University of Technology in Bratislava, Bratislava, Slovak Republic

Supported by grants: "EXTEMIT - K" No. CZ.02.1.01/0.0/0.0/15_003/0000433 financed by OP RDE; "The pilot analyses for Last Tree Standing studies" No. A_19_06 and "Factors of Norway spruce survival during large-scale disturbance in NP Šumava" No. A_21_09 financed by Internal Grant Agency FFWS CULS in Prague; No. 1/0300/19 and 1/0468/20 financed by the Grant Agency of Slovak Republic VEGA.