

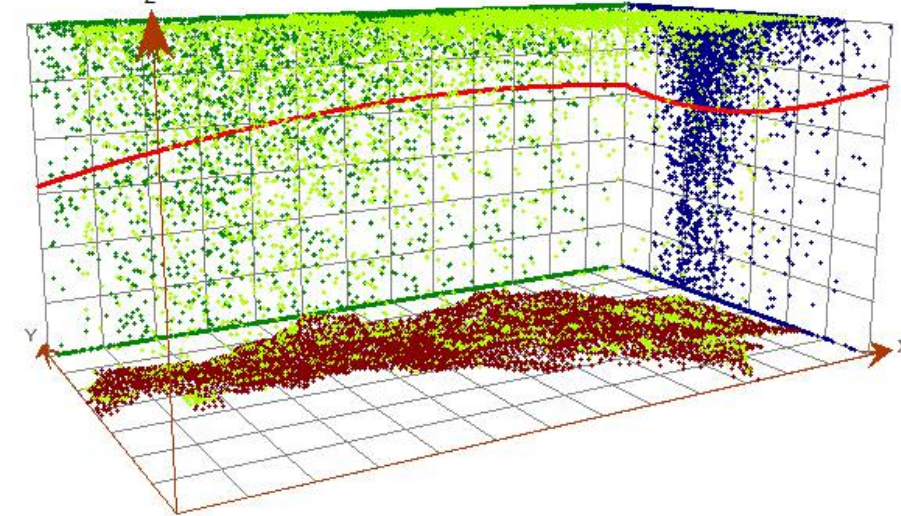
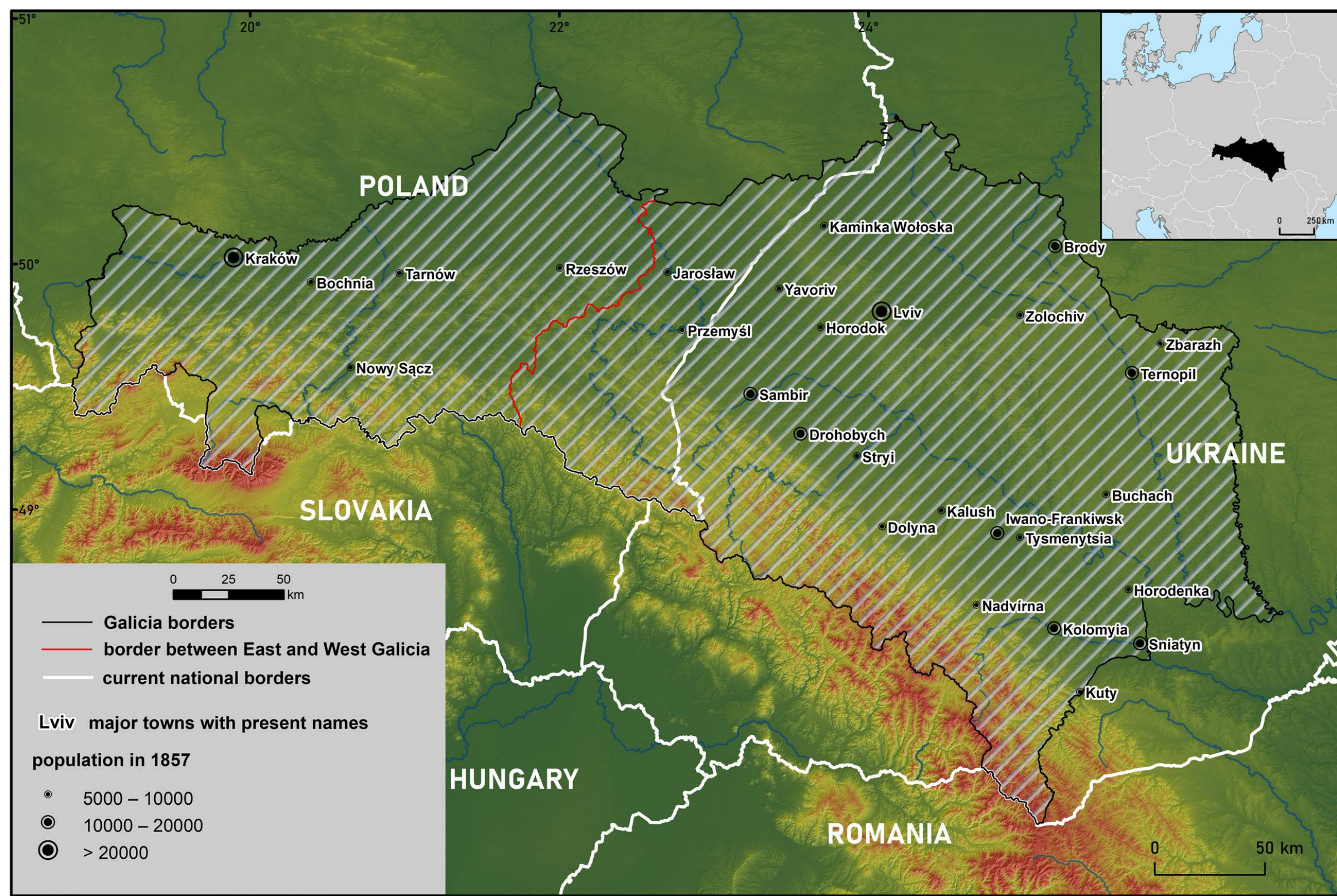


The great landed property in Galicia in the middle of 19th century: its legacy and influence on contemporary forest areas

Miklar Anna, Ostafin Krzysztof, Kozak Jacek

Faculty of Geography and Geology, Institute of Geography and Spatial Management, Jagiellonian University, Gronostajowa 7, 30-387 Kraków, Poland
presenter's e-mail address: anna.miklar@doctoral.uj.edu.pl

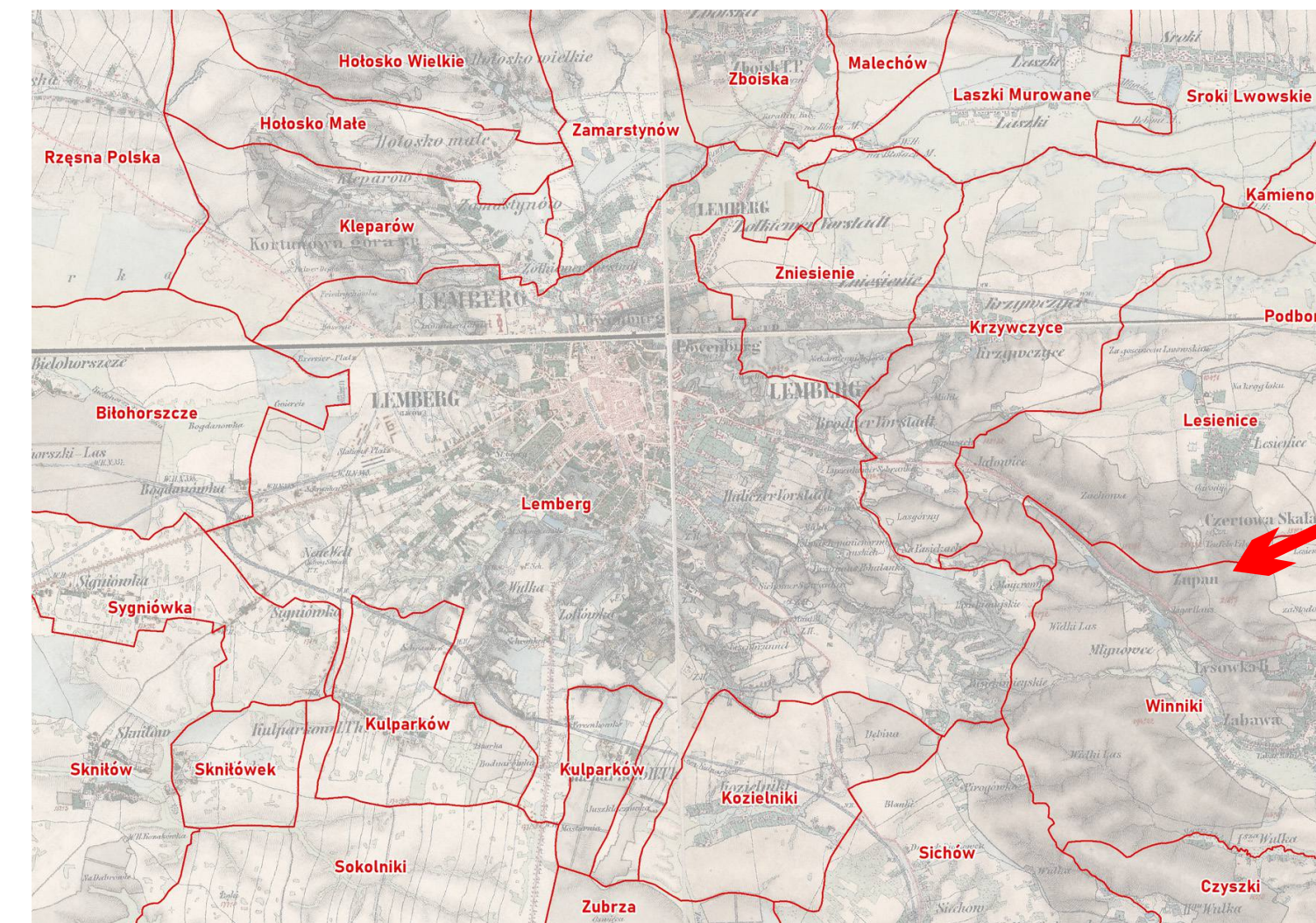
STUDY AREA



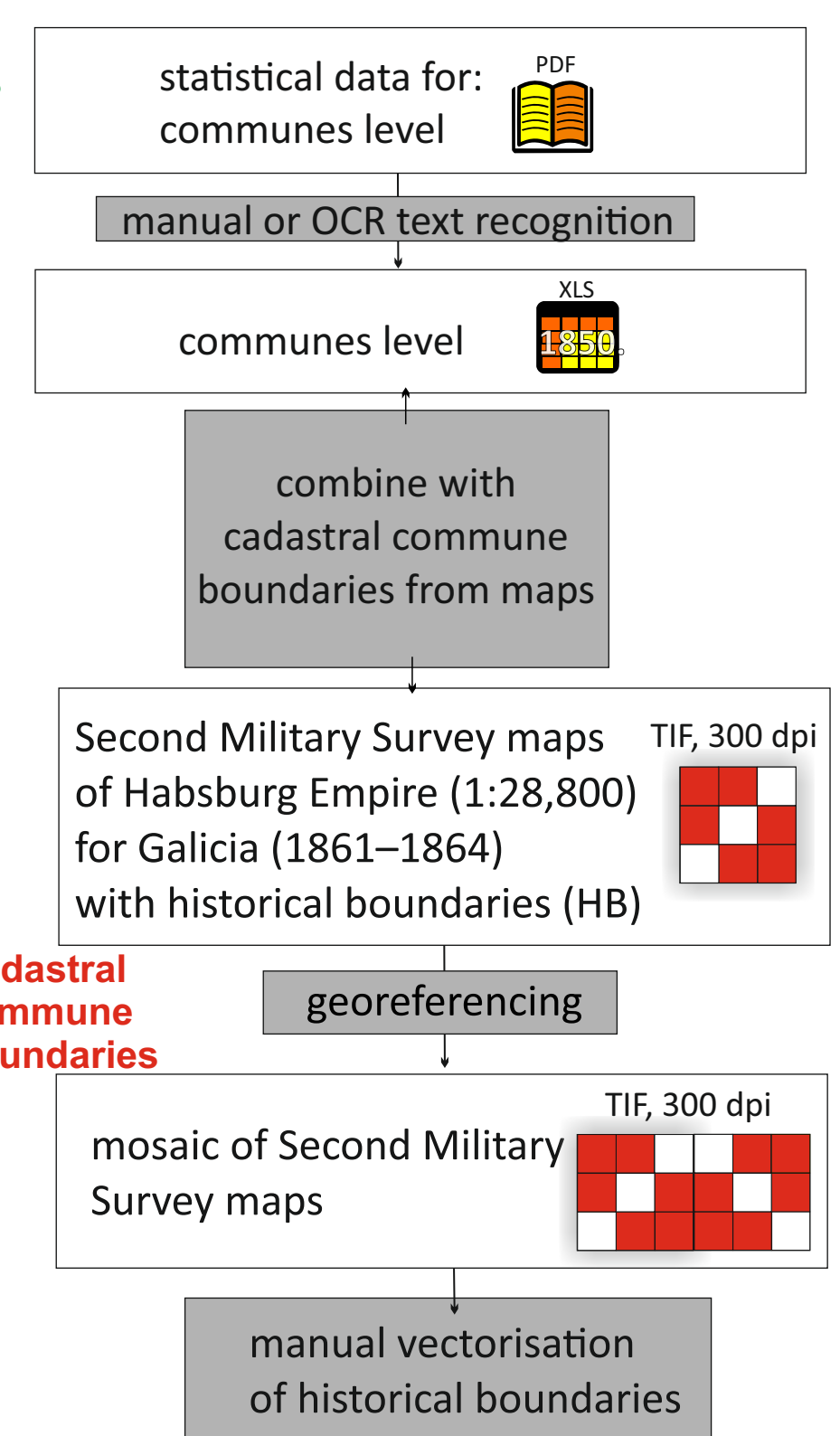
MATERIALS AND METHODS

Ludność według papiisu z roku 1857.	Grunta orne		Zaki i ogrody		Pastwiska		Las y		Właściciel tabularny
	wiekosz wlasności	maliczej wlasności	wiekosz wlasności	maliczej wlasności	wiekosz wlasności	maliczej wlasności	wiekosz wlasności	maliczej wlasności	
892	31	734	3	105	6	514	126	133	1686
165	4	217	56	27	176	360	89	920	Rządowo
1153	376	850	385	817	128	335	997	3	3800
897	287	326	215	327	19	397	346	81	3969
542	95	561	5	94	15	111	231	651	1753
978	968	506	28	68	86	151	906	8	1321
155	3	970	17	659	22	1301	90	292	3354

Skorowidz wszystkich miejscowości położonych w Królestwie Galicyi...1868

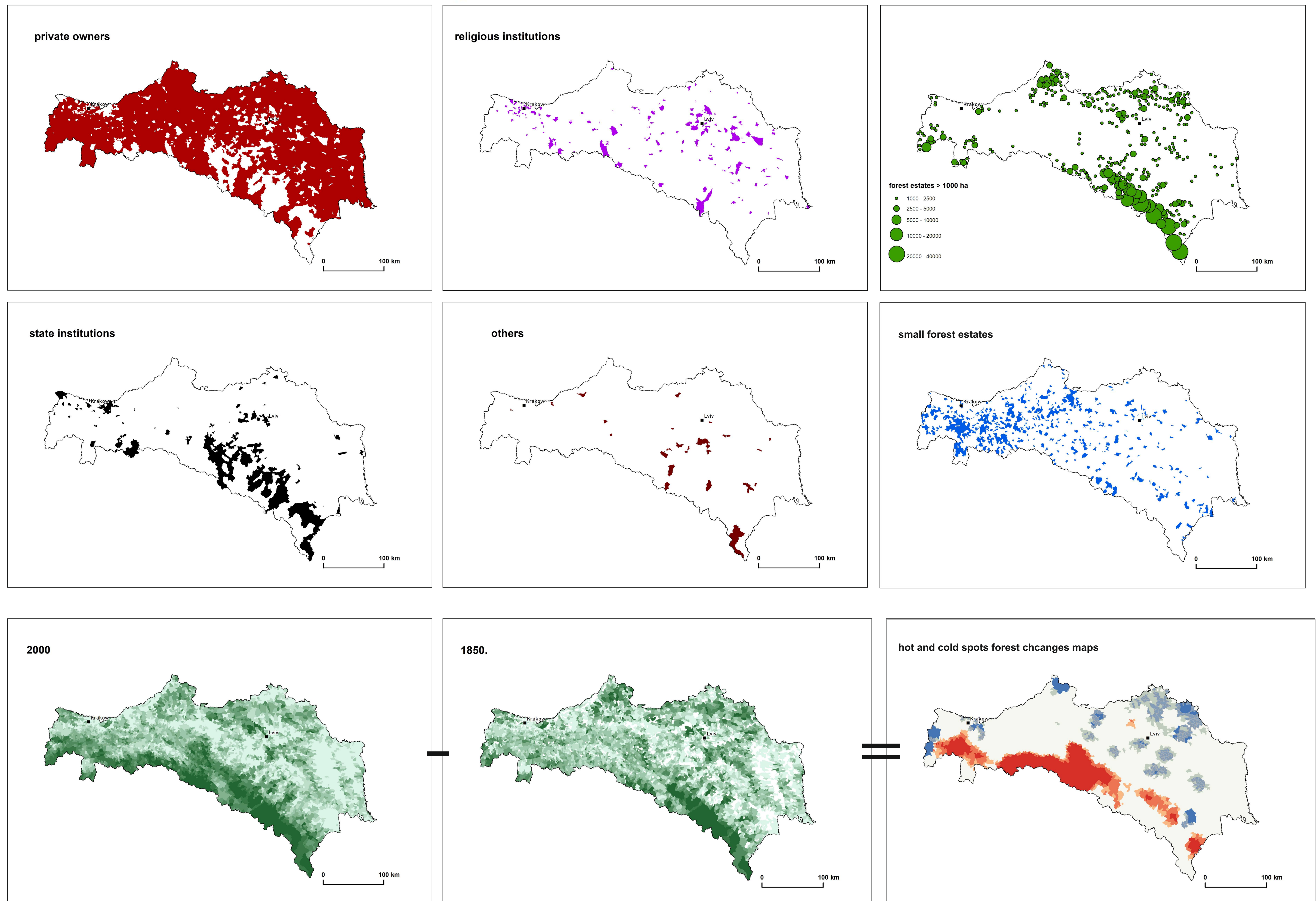


Second Military Survey Maps 1861 - 1864, 1:28,800



Hansen M. C. et al. 2013, High-Resolution Global Maps...

PRELIMINARY RESULTS:



Acknowledgments:

Supported by the International Visegrad Funds

This research was funded by the Ministry of Science and Higher Education, Republic of Poland under the frame of 'National Programme for the Development of Humanities' 2015–2020, as a part of the GASID project (Galicia and Austrian Silesia Interactive Database 1857–1910, 1aH 15 0324 83).